

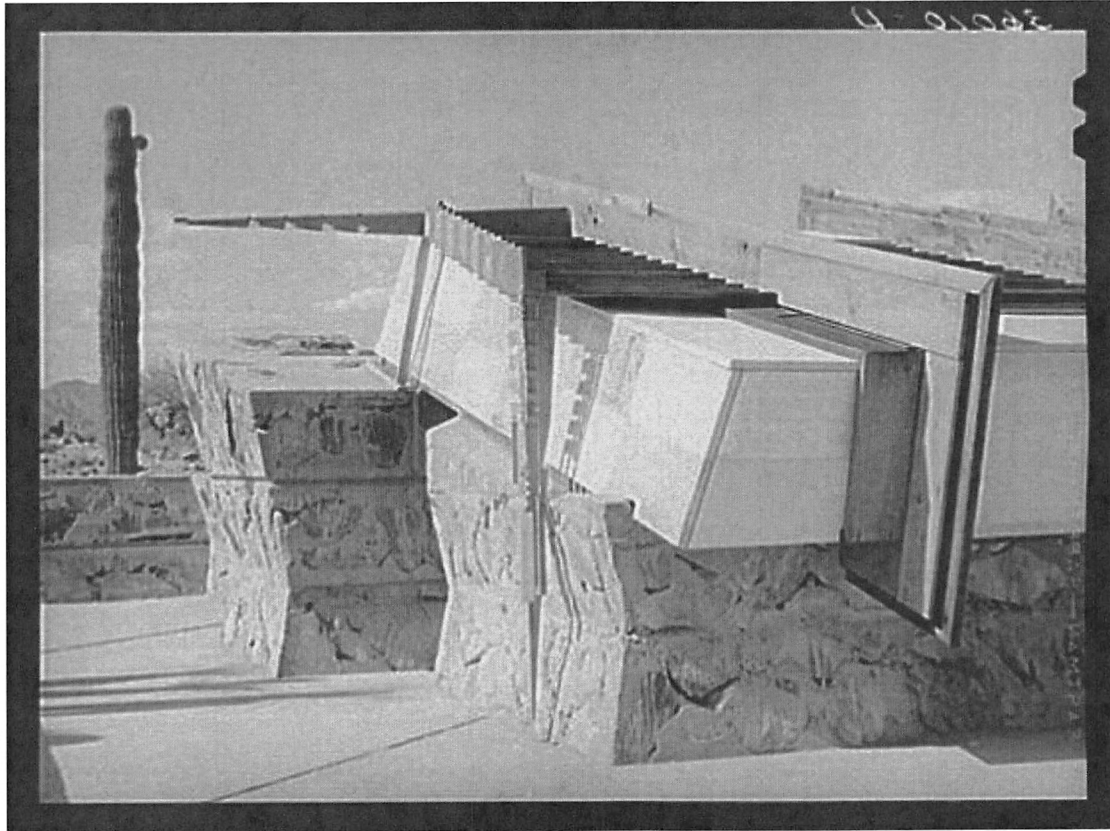
FLLW

Photographs of
Buildings
By
Frank Lloyd
Wright

From Farm
Security
Administration -
Office of War
Information
Photograph
Collection

A FINDING AID

The following records were
retrieved from the Library of
Congress web site for John W.
Geiger on 1 March 2010



TITLE: Detail of construction of corner drafting room of Frank Lloyd Wright's winter quarters at foot of McDowell Mountain. Maricopa County, Arizona

CALL NUMBER: LC-USF34- 036010-D [P&P]

REPRODUCTION NUMBER: LC-USF34-036010-D
(b&w film neg.)

MEDIUM: 1 negative : safety ; 3 1/4 x 3 1/4 inches or smaller.

CREATED/PUBLISHED: 1940 May.

CREATOR:: Lee, Russell, 1903-1986,
photographer.

NOTES:Title and other information from caption card. Transfer; United States. Office of War Information. Overseas Picture Division. Washington Division; 1944.

Film copy on SIS roll 24, frame 815.

SUBJECTS:: United States--Arizona--Maricopa County.

FORMAT:: Safety film negatives.

PART OF: Farm Security Administration - Office of War Information Photograph Collection (Library of Congress)

REPOSITORY: Library of Congress Prints & Photographs Division Washington, DC 20540
<http://hdl.loc.gov/loc.pnp/pp.print>

DIGITAL ID: (intermediary roll film) fsa 8b24629
<http://hdl.loc.gov/loc.pnp/fsa.8b24629>

OTHER NUMBER: H 96953

CONTROL #: fsa2000017300/PP



TITLE: Detail of winter quarters of Frank Lloyd Wright's architectural group. Materials used in these buildings are native stone, redwood and canvas. Foot of McDowell Mountain, Maricopa County, Arizona

CALL NUMBER: LC-USF34- 036161-D [P&P]

SUBJECTS:: United States--Arizona--Maricopa County.

REPRODUCTION NUMBER: LC-USF34-036161-D
(b&w film neg.)

FORMAT: Safety film negatives.

MEDIUM: 1 negative : safety ; 3 1/4 x 3 1/4 inches or smaller.

PART OF: Farm Security Administration - Office of War Information Photograph Collection (Library of Congress)

CREATED/PUBLISHED: 1940 May.

REPOSITORY: Library of Congress Prints & Photographs Division Washington, DC 20540
<http://hdl.loc.gov/loc.pnp/pp.print>

CREATOR:: Lee, Russell, 1903-1986,
photographer.

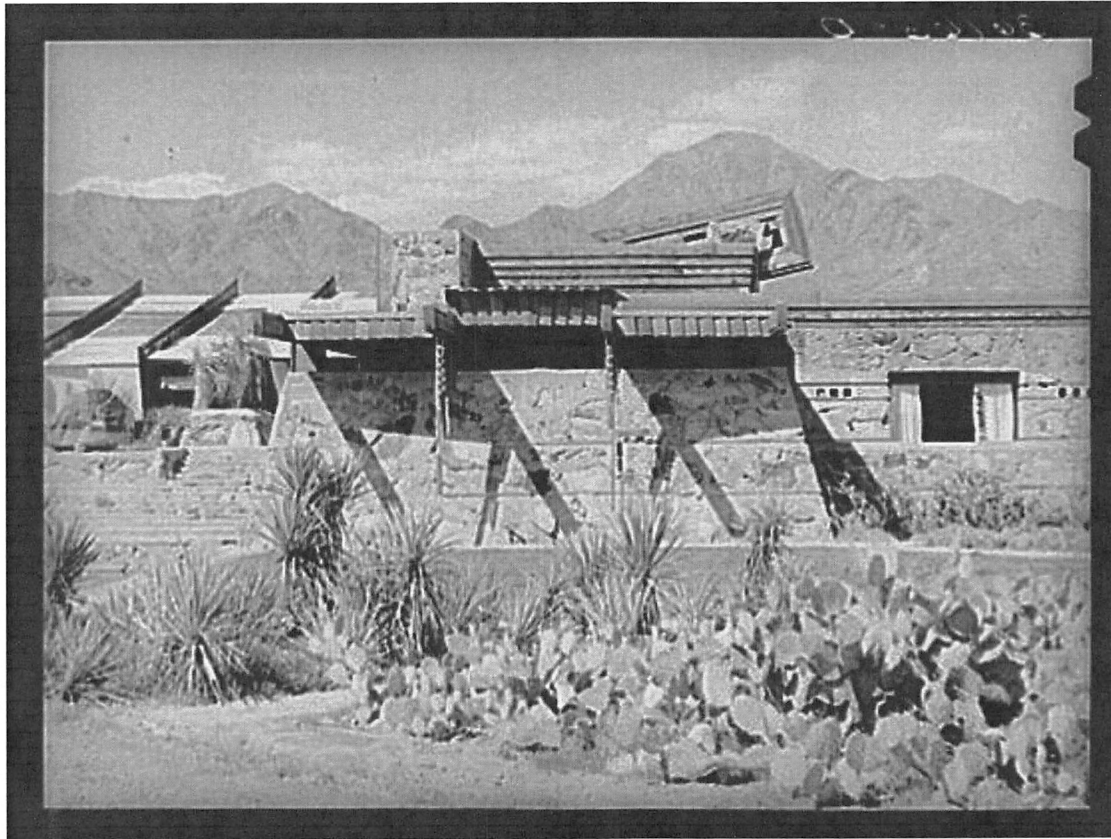
NOTES:: Title and other information from caption card. Transfer; United States. Office of War Information. Overseas Picture Division. Washington Division; 1944.

DIGITAL ID: (intermediary roll film) fsa 8b24762
<http://hdl.loc.gov/loc.pnp/fsa.8b24762>

OTHER NUMBER: H 96953

Film copy on SIS roll 24, frame 972.

CONTROL #: fsa2000017455/PP



TITLE: Detail of winter quarters of Frank Lloyd Wright's architectural group showing use of hanging ornament of Chinese influence to help tie building to ground. Foot of McDowell Mountain, Maricopa County, Arizona

CALL NUMBER: LC-USF34- 036163-D [P&P]

REPRODUCTION NUMBER: LC-USF34-036163-D
(b&w film neg.)

MEDIUM: 1 negative : safety ; 3 1/4 x 3 1/4 inches or smaller.

CREATED/PUBLISHED: 1940 May.

CREATOR: Lee, Russell, 1903-1986,
photographer.

NOTES: Title and other information from caption card. Transfer; United States. Office of War Information. Overseas Picture Division. Washington Division; 1944.

Film copy on SIS roll 24, frame 974.

SUBJECTS: United States--Arizona--Maricopa County.

FORMAT: Safety film negatives.

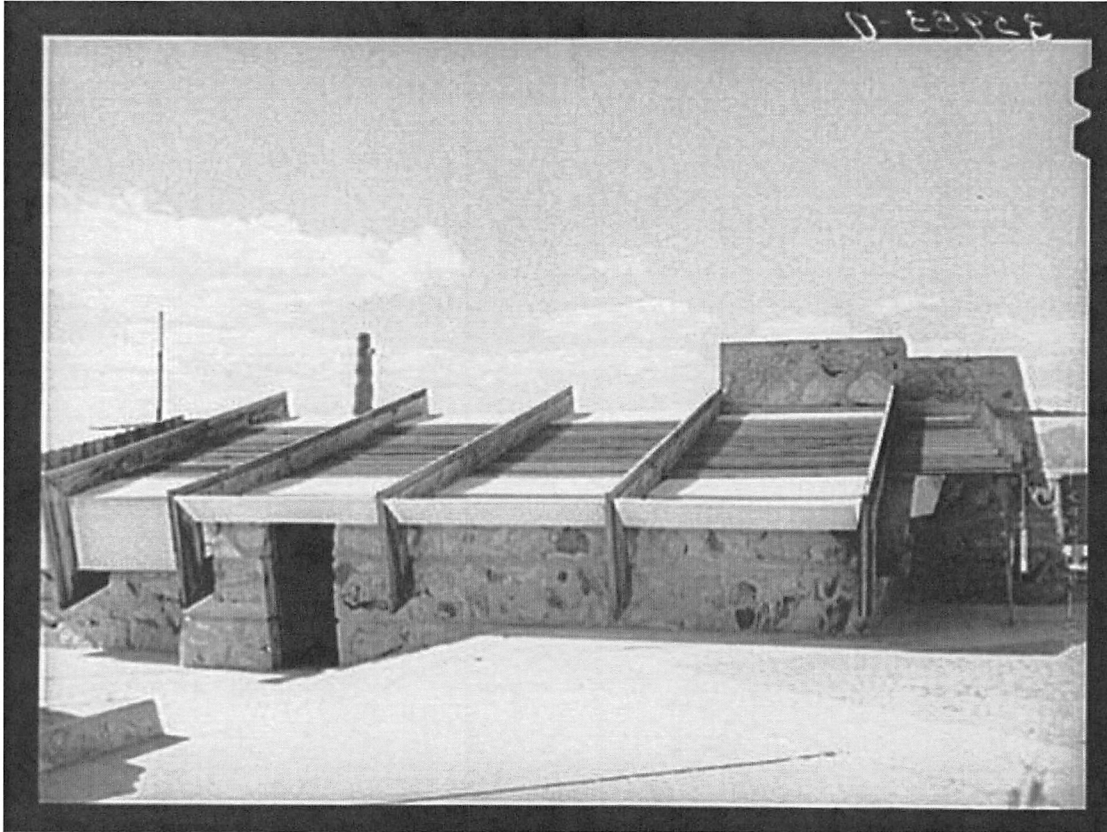
PART OF: Farm Security Administration - Office of War Information Photograph Collection (Library of Congress)

REPOSITORY: Library of Congress Prints & Photographs Division Washington, DC 20540
<http://hdl.loc.gov/loc.pnp/pp.print>

DIGITAL ID: (intermediary roll film) fsa 8b24764
<http://hdl.loc.gov/loc.pnp/fsa.8b24764>

OTHER NUMBER: H 96953

CONTROL #: fsa2000017457/PP



TITLE: Detail of roof of drafting room of Frank Lloyd Wrights winter quarters at foot of McDowell Mountain. Maricopa County, Arizona. This roof is of heavy canvas and produces a favorable and even light for drafting work

CALL NUMBER: LC-USF34- 035983-D [P&P]

REPRODUCTION NUMBER: LC-USF34-035983-D
(b&w film neg.)

MEDIUM: 1 negative : safety ; 3 1/4 x 3 1/4 inches or smaller.

CREATED/PUBLISHED: 1940 May.

CREATOR: Lee, Russell, 1903-1986,
photographer.

NOTES: Title and other information from caption card. Transfer; United States. Office of War Information. Overseas Picture Division. Washington Division; 1944.

Film copy on SIS roll 24, frame 788.

SUBJECTS: United States--Arizona--Maricopa County.

FORMAT: Safety film negatives.

PART OF: Farm Security Administration - Office of War Information Photograph Collection (Library of Congress)

REPOSITORY: Library of Congress Prints & Photographs Division Washington, DC 20540
<http://hdl.loc.gov/loc.pnp/pp.print>

DIGITAL ID: (intermediary roll film) fsa 8b24602
<http://hdl.loc.gov/loc.pnp/fsa.8b24602>

OTHER NUMBER: H 96953

CONTROL #: fsa2000017273

OVERVIEW

The photographs in the Farm Security Administration - Office of War Information Photograph Collection form an extensive pictorial record of American life between 1935 and 1944. This U.S. government photography project was headed for most of its existence by Roy E. Stryker, who guided the effort in a succession of government agencies: the Resettlement Administration (1935-1937), the Farm Security Administration (1937-1942), and the Office of War Information (1942-1944). The collection also includes photographs acquired from other governmental and non-governmental sources, including the News Bureau at the Offices of Emergency Management (OEM), various branches of the military, and industrial corporations. In total, the black-and-white portion of the collection consists of about 171,000 black-and-white film negatives, encompassing both negatives that

were printed for FSA-OWI use and those that were not printed at the time (use the "Display Images with Neighboring Call Numbers" link on the catalog records to see these uncaptioned images). Color transparencies also made by the FSA/OWI are available in a separate section of the catalog: [FSA/OWI Color Photographs](#)



The winter quarters of Frank Lloyd Wright architectural group at foot of McDowell Mountain. Maricopa County, Arizona.

Lee, Russell, 1903-1986, photographer.

CREATED/PUBLISHED: 1940 May.

NOTES: Title and other information from caption card.

Transfer; United States. Office of War Information. Overseas Picture Division. Washington Division; 1944.

More information about the **FSA/OWI** Collection is available at <http://hdl.loc.gov/loc.pnp/pp.fsaowi>

SUBJECTS

Safety film negatives.

United States--Arizona--Maricopa County.

MEDIUM: 1 negative : safety ; 3 1/4 x 3 1/4 inches or smaller.

CALL NUMBER: LC-USF34- 036107-D

REPRODUCTION NUMBER

LC-USF34-036107-D DLC (b&w film neg.)

PART OF: Farm Security Administration - Office of War Information Photograph Collection (Library of Congress)

REPOSITORY: Library of Congress Prints & Photographs Division Washington, DC 20540 <http://hdl.loc.gov/loc.pnp/pp.print>

DIGITAL ID

(intermediary roll film) **fsa 8b24718**
<http://hdl.loc.gov/loc.pnp/fsa.8b24718>



Detail of winter quarters of Frank Lloyd Wright at foot of McDowell Mountain. Maricopa County, Arizona.

Lee, Russell, 1903-1986, photographer.

CREATED/PUBLISHED: 1940 May.

NOTES: Title and other information from caption card.

Transfer; United States. Office of War Information. Overseas Picture Division. Washington Division; 1944.

More information about the **FSA/OWI** Collection is available at <http://hdl.loc.gov/loc.pnp/pp.fsaowi>

SUBJECTS

Safety film negatives.

United States--Arizona--Maricopa County.

MEDIUM: 1 negative : safety ; 3 1/4 x 3 1/4 inches or smaller.

CALL NUMBER: LC-USF34- 036108-D

REPRODUCTION NUMBER: LC-USF34-036108-D
DLC (b&w film neg.)

PART OF: Farm Security Administration - Office of War Information Photograph Collection (Library of Congress)

REPOSITORY

Library of Congress Prints & Photographs Division Washington, DC 20540
<http://hdl.loc.gov/loc.pnp/pp.print>

DIGITAL ID

(intermediary roll film) **fsa 8b38141**
<http://hdl.loc.gov/loc.pnp/fsa.8b38141>



Detail of construction of Frank Lloyd Wright's winter quarters at foot of McDowell Mountain. Maricopa County. Arizona.

Lee, Russell, 1903-1986, photographer.

CREATED/PUBLISHED: 1940 May.

NOTES: Title and other information from caption card.

Transfer; United States. Office of War Information. Overseas Picture Division. Washington Division; 1944.

More information about the FSA/OWI Collection is available at <http://hdl.loc.gov/loc.pnp/pp.fsaowi>

SUBJECTS

Safety film negatives.

United States--Arizona--Maricopa County.

MEDIUM: 1 negative : safety ; 3 1/4 x 3 1/4 inches or smaller.

CALL NUMBER: LC-USF34- 035982-D

REPRODUCTION NUMBER: LC-USF34-035982-D
DLC (b&w film neg.)

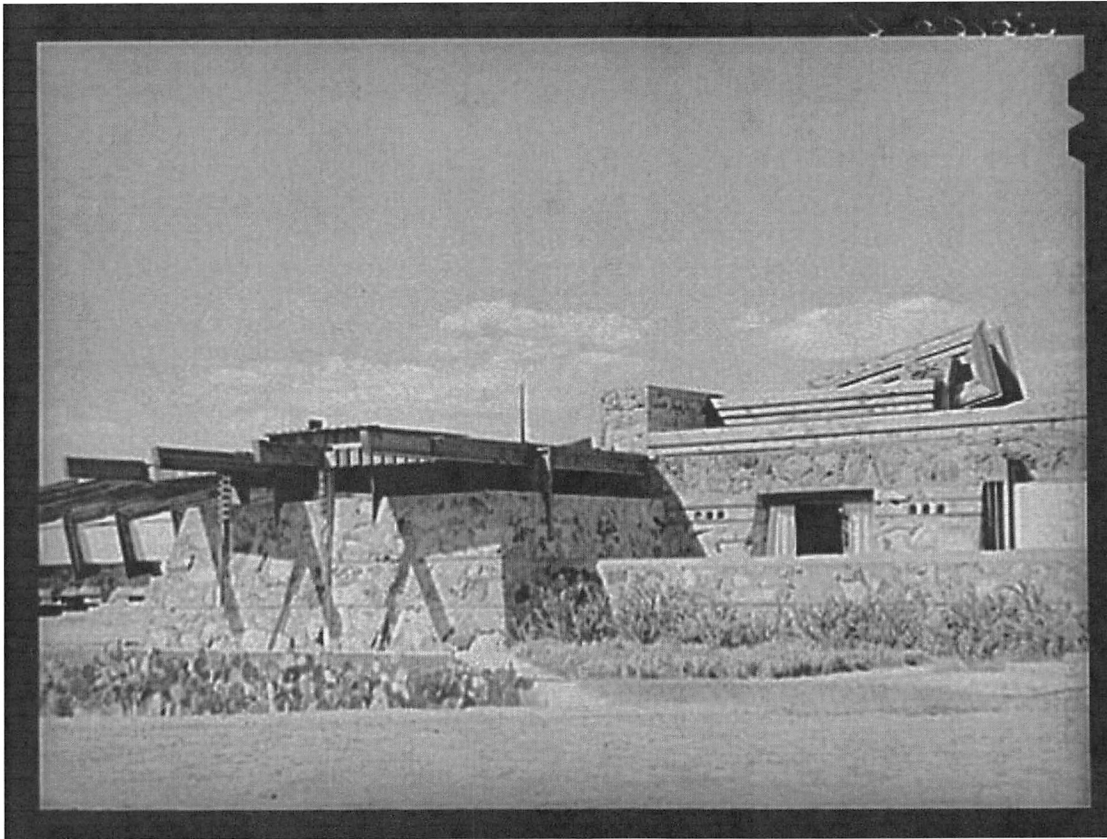
PART OF: Farm Security Administration - Office of War Information Photograph Collection (Library of Congress)

REPOSITORY

Library of Congress Prints & Photographs Division Washington, DC 20540
<http://hdl.loc.gov/loc.pnp/pp.print>

DIGITAL ID

(intermediary roll film) fsa 8b24601
<http://hdl.loc.gov/loc.pnp/fsa.8b24601>



Detail of winter quarters of Frank Lloyd Wright. Foot of McDowell Mountain, Maricopa County, Arizona.

Lee, Russell, 1903-1986, photographer.

CREATED/PUBLISHED: 1940 May.

NOTES: Title and other information from caption card.

Transfer; United States. Office of War Information. Overseas Picture Division. Washington Division; 1944.

More information about the FSA/OWI Collection is available at <http://hdl.loc.gov/loc.pnp/pp.fsaowi>

SUBJECTS

Safety film negatives.

United States--Arizona--Maricopa County.

MEDIUM: 1 negative : safety ; 3 1/4 x 3 1/4 inches or smaller.

CALL NUMBER: LC-USF34- 036106-D

REPRODUCTION NUMBER: LC-USF34-036106-D
DLC (b&w film neg.)

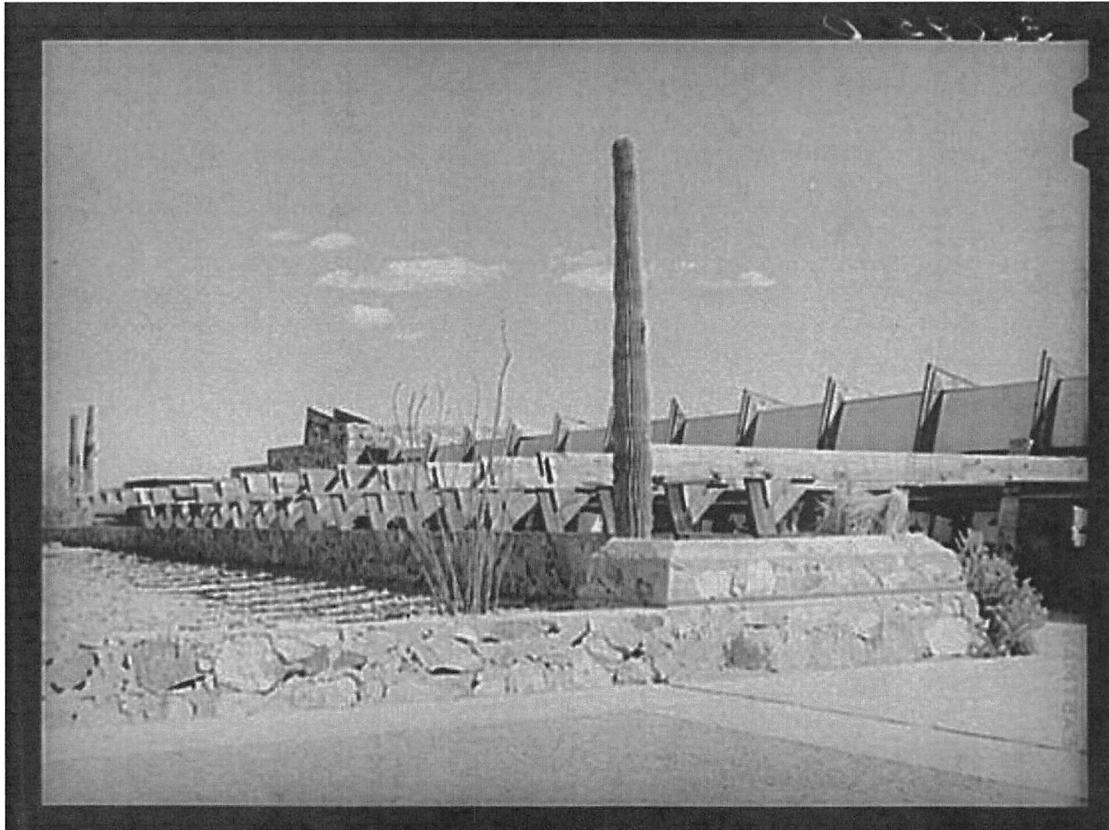
PART OF: Farm Security Administration - Office of War Information Photograph Collection (Library of Congress)

REPOSITORY

Library of Congress Prints & Photographs Division Washington, DC 20540
<http://hdl.loc.gov/loc.pnp/pp.print>

DIGITAL ID

(intermediary roll film) fsa 8b24717
<http://hdl.loc.gov/loc.pnp/fsa.8b24717>



Open arcade downside of drafting room at winter quarters of Frank Lloyd Wright. Foot of McDowell

Mountain, Maricopa County, Arizona.

Lee, Russell, 1903-1986, photographer.

CREATED/PUBLISHED: 1940 May.

NOTES: Title and other information from caption card.

Transfer; United States. Office of War Information. Overseas Picture Division. Washington Division; 1944.

More information about the FSA/OWI Collection is available at <http://hdl.loc.gov/loc.pnp/pp.fsaowi>

SUBJECTS

Safety film negatives.

United States--Arizona--Maricopa County.

MEDIUM: 1 negative : safety ; 3 1/4 x 3 1/4 inches or smaller.

CALL NUMBER: LC-USF34- 036095-D

REPRODUCTION NUMBER

LC-USF34-036095-D DLC (b&w film neg.)

PART OF

Farm Security Administration - Office of War Information Photograph Collection (Library of Congress)

REPOSITORY

Library of Congress Prints & Photographs Division Washington, DC 20540
<http://hdl.loc.gov/loc.pnp/pp.print>

DIGITAL ID

(intermediary roll film) fsa 8b24708
<http://hdl.loc.gov/loc.pnp/fsa.8b24708>